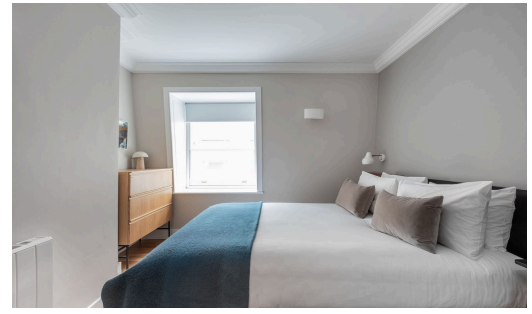


# Sandeman House

3-6 Sandeman House, 20 St Swithin's Lane, London EC4N 8AD



Tucked away in a quiet courtyard within London's historic banking district, this is an elegant converted townhouse in an area that's packed with amazing restaurants, cafes and bars. Each apartment offers a little bit of luxury for the weary traveller and a welcome treat for the eyes. A rich colour palette of dark blues and greens, Tom Dixon floor lamps, real wooden floors and Paul Smith rugs; we've carefully designed every detail for style and comfort.

We've fitted stunning modern kitchens with a dishwasher, washing machine, microwave, pots, pans and tableware enough to satisfy even the most demanding of chefs! There's free wifi to catch up on emails and luxury bathroom products so you can just unpack, settle in and start exploring.

*Reserve this apartment!*
[info@findlondonapartments.com](mailto:info@findlondonapartments.com)
[+44 \(0\)20 8012 7847](tel:+44(0)2080127847)



## Features include

- \* Secure Entry Phone System
- \* Full Kitchen with Washer Dryer
- \* WiFi
- \* Weekly Maid Service
- \* Smart TV with freeview

