

# Draycott Place Chelsea by Viridian

49 Draycott Place, London SW3 2SA



Draycott Place Chelsea by Viridian are a four minute stroll across Sloane Square to Sloane Square underground station which sits between South Kensington and Victoria stations on the District and Circle lines. Bordering Kensington, Knightsbridge, and Belgravia this is a fantastic neighbourhood to live in and an easy commute for executives working in the City but wanting to live somewhere more buzzy and residential.

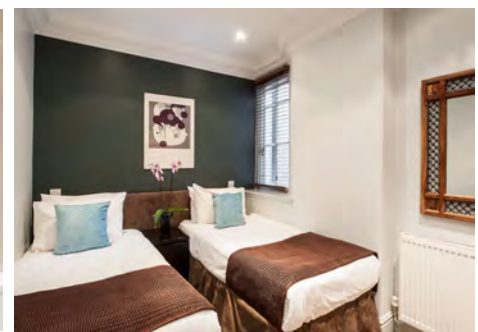
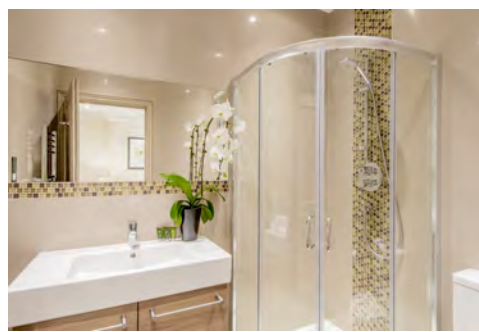
These stylish studio and one bedroom serviced apartments are located in a beautiful period Victorian red brick buildings placed perfectly in the centre of residential Chelsea.

The elegant studios and one bedroom serviced apartments come complete with fully appointed and equipped kitchens ideal for self-catering after a day in the office. Other facilities include en-suite bathroom, complimentary Wi-Fi, iPod docking station and digital television with freeview.

*Reserve this apartment!*

info@findlondonapartments.com

+44 (0)20 8012 7847



## Features include

- \* Secure Entry System
- \* Fully fitted and equipped kitchen
- \* Weekly Maid Service
- \* Television with Freeview
- \* WiFi
- \* Washer/Dryer

